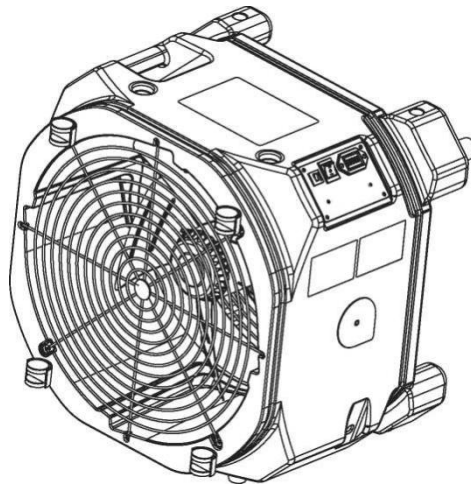


Razorback MaxxAir ZE AAM Installation and Operations Manual



READ AND SAVE THESE INSTRUCTIONS
Razorback Cleaning & Restoration Equipment

194D Zillmere Road, Boondall, QLD 4034

Tel:1800 68 68 69

E-mail:sales@ccwarehouse.com.au



- **The appliance is not to be used by persons (including children) with reduced physical, sensory or mental capabilities, or lack of experience and knowledge, unless they have been given supervision or instruction.**
- **Children being supervised not to play with the appliance. Cleaning and user maintenance shall not be made by children without supervision.**
- **Ensure that the fan is switched off from the supply mains before removing the guard.**
- **If the supply cord is damaged, it must be replaced by the manufacturer, its service agent or similarly qualified persons in order to avoid a hazard.**

Safety Notes

WARNING:

- Do not adjust or alter the unit in any way. Only use the parts approved by Razorback Cleaning & Restoration Equipment. Any adjustments or use of unauthorized parts will void your warranty. For further assistance, contact your dealer or distributor.
- Do not let children play with unit. Always keep the unit out of reach of children.
- Do not restrict airflow to unit
- Do not use unit with extension cords.
- Do not use an external speed control device.
- Do not drop or throw the unit This could damage the inner parts and wiring.
- Do not use the unit in standing water.
- Do not use the unit outside as the internal components may get damp.
- Do not use air mover with a malfunctioning outlet or plug.
- Do not run power cord under carpet, runners, or other coverings.

While Operating the Razorback MaxxAir ZE AAM:

- Always use a grounding plug and grounded electric outlet to reduce risk of fire and shock.
- Always use caution when stacking units to prevent them from falling. Avoid stacking units in crowded areas.
- Always secure units during transportation to prevent them from moving.
- Always maintain a reasonable distance between the air inlet and carpets or other materials. Failure to do so may clog the inlet or cause overheating.
- Always keep the motor free of dirt, dust, and other particles that could cause the motor to overheat. Clean the motor with a vacuum if it gets dirty.
- Always unplug the machine before performing any maintenance.
- Always contact an authorized technician for help repairing your machine.
- Always use the unit on a level, steady surface.

Specifications

Drive Motor	1/4 hp 1-phase 220/240 VAC 2-speed 4-pole, PSC Electric Motor
Voltage	220 VAC
Current	2.1 Amps (High Speed)
Power Cord	7m
Air Flow	Approx. 3000 CFM
Sound Level	<70dBa
Weight	15 kg
Dimensions (WxHxD)	520*510*410mm

Getting Started

The Razorback MaxxAir ZE AAM air mover blows high velocity air over wet surfaces to shorten the drying time. In addition to accelerating evaporation, the Razorback MaxxAir ZE AAM also helps prevent mold and mildew. To use the air mover, simply direct the air outlet to the targeted area.

Identification

Congratulations on purchasing a Razorback MaxxAir ZE AAM air mover. In order to take advantage of the warranty plan, be sure to note the serial number and date of purchase.

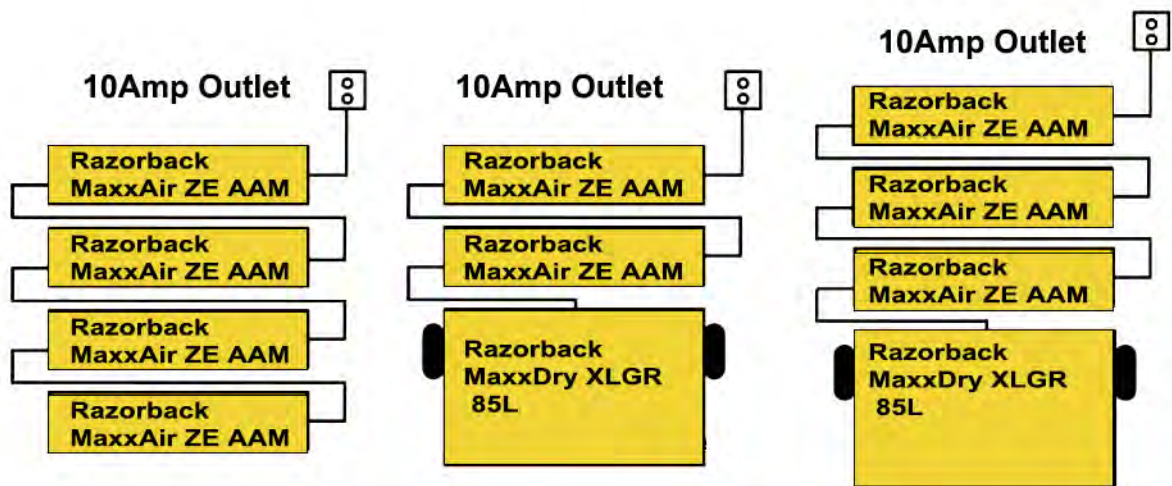
Serial Number:

Date of Purchase:

Electrical Connection

- Only connect the machine to 220V/50Hz outlet.
- Ensure the electrical outlet is grounded.

Linking Multiple Machines



NOTE: GFCI is not available for 220V.

Each Razorback MaxxAir ZE AAM air mover draws 2.1 amps and is equipped with a 12 amp circuit board. This means that you can link up to 4 units to run on the same circuit. When daisy chaining the units, always turn on one unit at a time rather than starting all units simultaneously, which could cause the circuit to short.

Humidity Control

While using an air mover to dry the air, you may find out that the humidity is rising. To avoid this, it is useful to pair the air mover with a dehumidifier. A dehumidifier can effectively control the humidity level, while also reducing the drying time. For mold control, the ideal humidity level is below 60% RH.

Temperature & Air Circulation

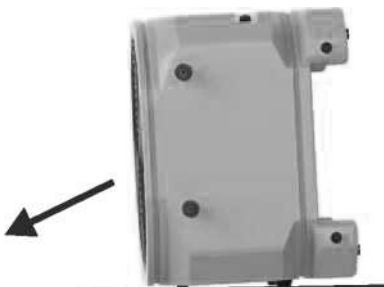
To cool down a warm room, place the Razorback MaxxAir ZE AAM at the doors or in a cooler spot with air directed at the hot area. If set up properly, the high velocity air from the machine can cool a room down quite effectively.

Set Up

The Razorback MaxxAir ZE AAM can be operated in multiple positions, depending on what direction you need to target the airflow.



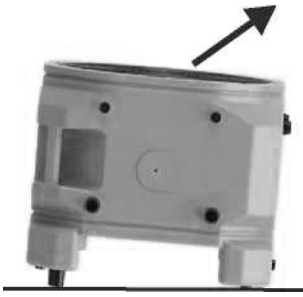
◀ Tilt Back — This position will create laminar airflow to the floor.



< Tilt Forward — This position will direct air upwards.



< Face Down - This position will send air directly to the floor.



< Face Up - This position will direct air straight to the ceiling.



< Stacked for Operation — This gives you the opportunity to run two units simultaneously.

NOTE: Always ensure units are stable and on a level surface when stacking them.



< Stacked for Storage — The units can also be stacked sideways for storage if space is limited.

NOTE: Units can not be operated in this position.

Operating Instructions

1. Connect the air mover to a standard 220V/50Hz outlet
2. Place the unit in the desired position.
3. Use the switch on the control panel to select your speed (high or low).
4. Refrain from moving the unit during operation.

Maintenance

NOTE: All maintenance procedures should be performed with the unit unplugged.

Check Electrical Components

Remove the housing and check for issues such as power cord damage, bare wires, insecure fasteners, and discoloration.

NOTE: Repair any damaged wiring as soon as possible to avoid a fire hazard or risk of electrical shock.

Check External Components

Evaluate the the exterior of the machine and ensure all parts are in place. Repair or replace any parts as needed.

Clean the Grills

Wipe off any dust or particulate accumulation on the grill. If there is an accumulation of dust on the grill, it will restrict the air flow, which may cause the electric motor to overheat.

Clean the Exterior

Clean the outside with a gentle cleanser and water.

Warranty

All warranty benefits apply to the original owner only. Warranty cannot be transferred or assigned.

10 YEARS (FROM DATE OF PURCHASE): Razorback Cleaning & Restoration Equipment warrants the air scrubber be free of defects in the polyethylene body. At its discretion, Razorback Cleaning & Restoration Equipment will repair or replace the unit body, free of charge. (excluding transportation costs).

1 Year (from date of purchase): Razorback Cleaning & Restoration Equipment warrants the machine will operate free of defects in workmanship and materials. At ifs discretion, Razorback Cleaning & Restoration Equipment will repair or replace any malfunctioning components, free of charge (excluding transportation costs).

Customer Responsibilities: In order to take advantage of the warranty service, the customer must do the following:

1. Customer must provide normal care and maintenance (including, but not limited to cleaning filters).
2. Removal and re-installation of unit is the sole responsibility of owner.
3. 3.If the customer cannot return the unit to the certified repair center, all costs associated with shipment are borne by the customer. In addition, all ancillary charges related to freight shipments, including but not limited to palletizing, wrapping, labeling, and pickup are associated with the customer.
4. If shipped, customer is responsible for all risk of loss or damage.

Razorback Cleaning & Restoration Equipment Warranty Steps:

1. Once receive the goods, customers must log in www.ccwonline.com.au to fill out the warranty registration form and submit to Razorback Cleaning & Restoration Equipment company. We will receive your purchasing and installation information and save it. If no warranty registration is sent to us, warranty period will begin the day the shipment left the warehouse. Please be sure to record serial # and date of installation. You will need this information to receive the RA number.
2. If warranty service is necessary, customers must contact Razorback Cleaning & Restoration Equipment Tech Support by sales@ccwarehouse.com.au or local technical service phone to receive a Return Authorization (RA number). Once an RA has been issued, customers should bring the unit to a certified repair center. Razorback Cleaning & Restoration Equipment will arrange the shipping to bring the unit back to the Razorback Cleaning & Restoration Equipment warehouse (at the expense of the customers) if customers are not available.
3. After the unit has been received by Razorback Cleaning & Restoration Equipment (whether at a repair center or the warehouse), Razorback Cleaning & Restoration Equipment will have an initial inspection. If it is determined to be invalid warranty claim (see exclusions below), customers have to pay for all associated repair costs and shipping costs for units repair.
4. Customers can pick up the unit after repair at their own expense for shipping. Units will have a rigorous testing before sending it back to customers.
5. If the unit can no longer be fixed , and it is in the warranty period and determined to be valid claim, we will ship the customer a new unit within the same year warranty from the date of replacement.
6. After parts are repaired or replaced by Razorback Cleaning & Restoration Equipment, the original warranty period continues to applies until meet its deadline. No extensions to the original warranty period.

Warranty Exclusions:

DAMAGE DUE TO THE FOLLOWING IS NOT covered under warranty

1. Acts of Nature- including but not limited to:
 - flooding
 - fire
 - water damage
 - hurricane/storm damage
2. IMPROPER USAGE- Including but not limited to:
 - misuse, abuse, or tampering whether intentional or accidental
 - improper installation or design
 - improper voltage
 - lack of normal care
 - failure to follow instructions
3. Corrosion
4. Freezing
5. any additional costs due to changes in laws or building codes
6. freight charges
7. any costs due to lost profit or delay
8. damage to property

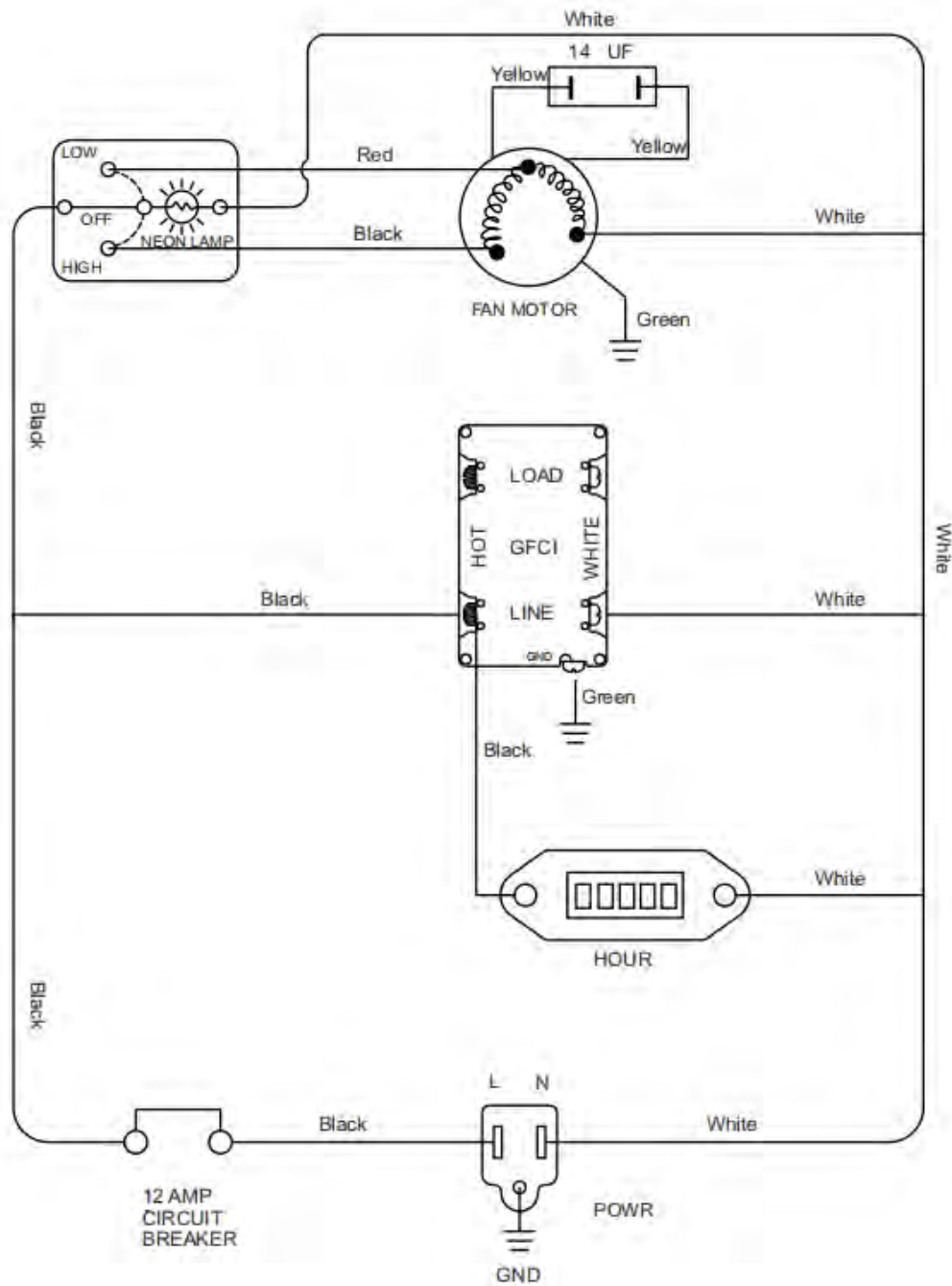
9. cause beyond control
10. consumable parts, including but not limited to:
 - filters
 - batteries
 - power cords
 - valves
 - switches
 - rubber parts
11. Direct, indirect, collateral or inconsequential damages of any kind

THE WARRANTIES AND LIABILITIES SET FORTH ARE IN LIEU OF ALL OTHER WARRANTIES EXPRESSED OR IMPLIED, IN LAW OR IN FACT, INCLUDING IMPLIED WARRANTIES OF MERCHANTABILITY AND FITNESS FOR PARTICULAR PURPOSE. Razorback Cleaning & Restoration Equipment's total liability, regardless of nature of claim shall not exceed original purchase price of the product. If a product or component is replaced while under warranty, the applicable warranty period shall not be extended beyond the original warranty time period.

The foregoing shall constitute the total liability of seller in the case of defective performance of all or any of the equipment or services provided to Buyer. Buyer agrees to accept and hereby accepts the foregoing as the sole and exclusive remedy for any breach or alleged breach of warranty by Seller.

Any dishonesty or fraud in connection with Razorback Cleaning & Restoration Equipment warranty thoroughly voids all warranty policies. Razorback Cleaning & Restoration Equipment expressly reserves the right to pursue legal action in the event of dishonesty, fraud, or attempted fraud.

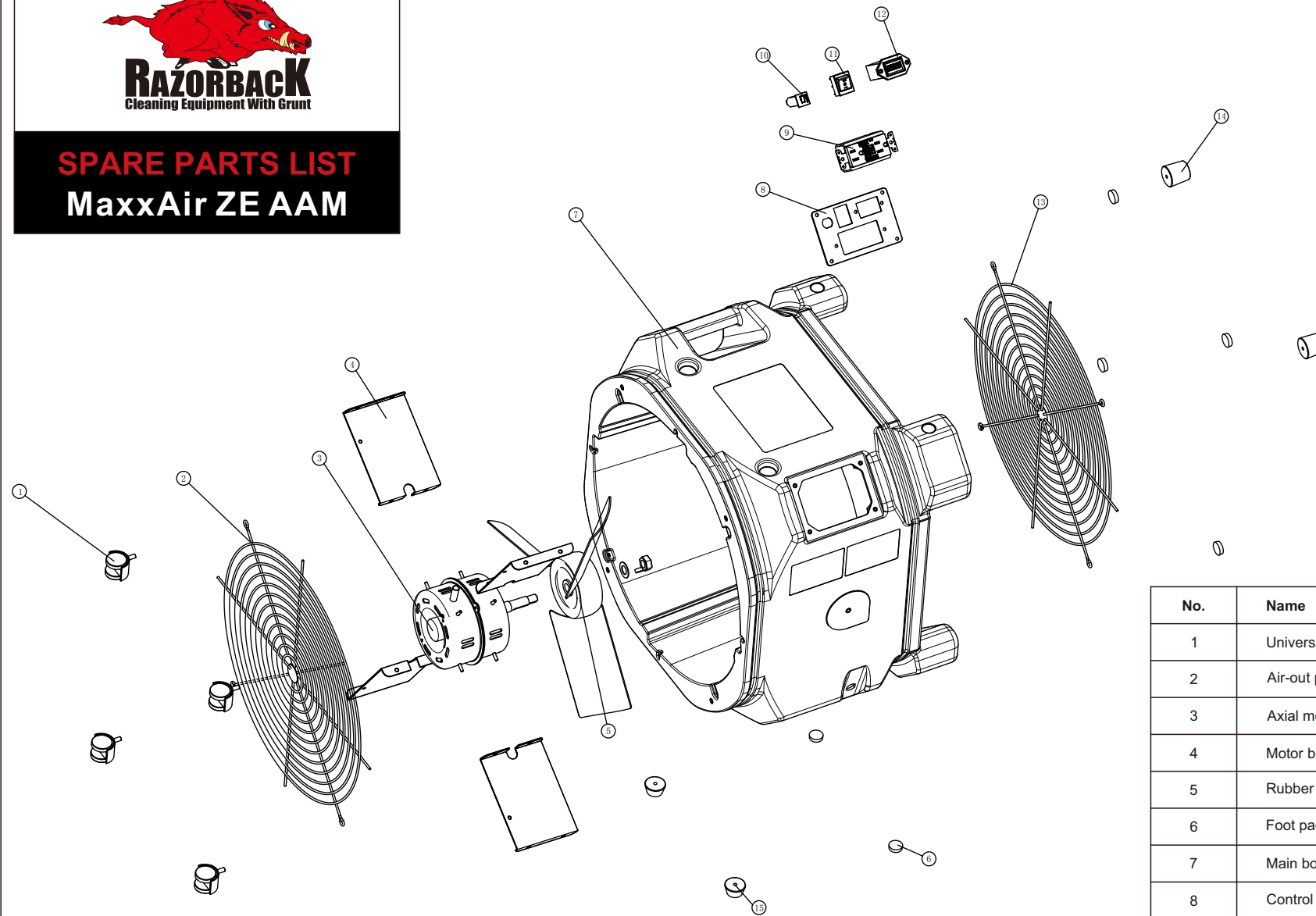
Wiring Diagram





SPARE PARTS LIST

MaxxAir ZE AAM



No.	Name	Material	Quantity
1	Universal wheel	Component	4
2	Air-out protect bracket	φ 3 steel wire	1
3	Axial motor	Component	1
4	Motor bracket	Galvanized sheet	1
5	Rubber foot pad	Rubber	2
6	Foot pad	Rubber	6
7	Main board	LLDPE	1
8	Control panel	Stainless steel plate	1
9	Terrace socket	220V 50Hz 10A	1
10	Overload protector	220V 50Hz 12A	1
11	Power switch	220V 50Hz 16A	1
12	Timer	220V 50HZ	1
13	Air-inlet protect bracket	φ 3 steel wire	1
14	Foot pad	Rubber	2
15	Rubber foot pad	Rubber	2



Razorback MaxxAir ZE AAM Air Mover

Model#: MaxxAir ZE AAM

Power Supply: 230VAC, 50Hz, 450W

With Fan Off: 12.0 Amps

With Fan On: 10.0 Amps

Fan Draws: High: 2.1 Amps Low: 1.4 Amps

Serial Number: R0001 Made in China

Manufactured Date: 2021-08-02

T

